

Winter / Spring Wedding Packages

Ceremony Only (6 hours)

- Use of Venue*
- Parking
- Optional Use of Venue Décor

PRICE :\$600

Half-Day Retreat (12 hours)

- Use of Venue*
- Use of Reception Areas**
- Free Parking
- Free Firewood
- Optional Use of Venue Decor

PRICE: \$1,000

Full Day Retreat (24 hours)

- Everything from the Half-Day Package
- One Night's Lodging ***
- Use of Hot Tub
- Bed Linens, Towels, Coffee

PRICE: \$1,550

Weekend Retreat (48 hours)

- Everything from the Full-Day Package Plus
- Second Night's Lodging

PRICE: \$2,200

Add-ons for w/Reception Packages

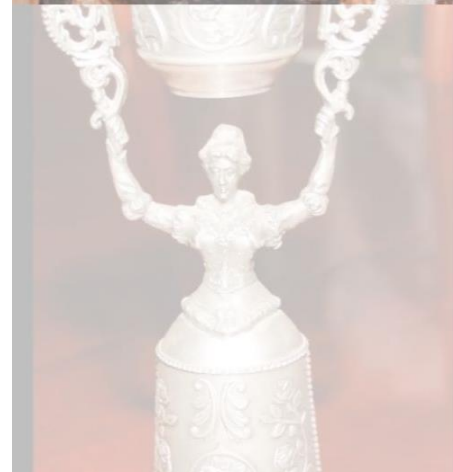
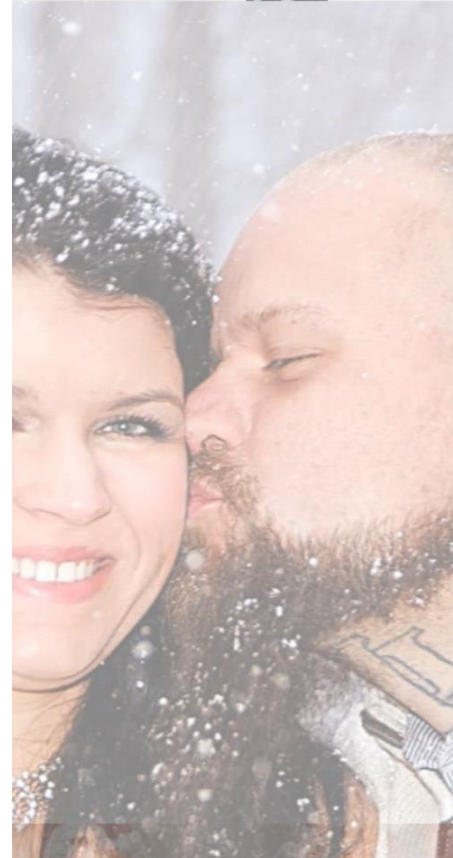
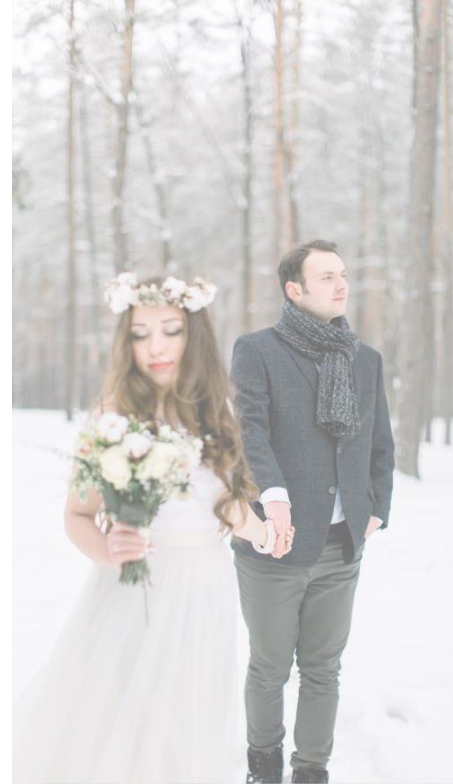
- Pet-Friendly Fee
- Additional Nights in the Lodge
- Use of Pig Cooker

Price: \$30-50
Starting @ \$450
Price: \$150

*Includes Log Venue for Ceremony, Dressing Rooms/Restrooms

** Includes Deck, Lawn, House, and Kitchen

These packages are for the off season, November through April





Sweet Retreat: Lodge And Event Venue
Tama Sweet, Owner / Manager
<https://www.sweetretreatlodge.com/>
(304) 719-5593

Summer / Fall Wedding Packages

Ceremony Only (6 hours M-W)

PRICE: \$1,000

- Use of Venue*
- Free Parking
- Optional Use of Venue Décor

Half-Day Retreat (12 hours M-W)

PRICE: \$1,500

- Use of Venue*
- Use of Reception Areas**
- Free Parking
- Free Firewood
- Optional Use of Venue Decor

Full Day Retreat (24 hours M-W)

PRICE \$2,200

- Everything from the Half-Day Package Plus
- One Night's Lodging
- Use of Hot Tub
- Bed Linens, Towels, Coffee

Weekend Retreat (48 hours)

PRICE: \$3,500

- Everything from the Full-Day Package Plus
- Second Night's Lodging

Add-ons for w/Reception Packages

- Pet-Friendly Fee ****
- Additional Nights in the Lodge
- Use of Pig Cooker

* Includes Log Venue for Ceremony, Dressing Rooms

** Includes Deck, Lawn, Kitchen, and Restrooms

Peak season Prices – May Through October

